

RESOLUTION NO. 2006-280

**A RESOLUTION OF THE CITY COUNCIL OF THE CITY OF ELK GROVE
APPROVING DEL WEBB VILLAGE 1 FINAL MAP (SUBDIVISION NO. 03-479.01)
AND EXECUTING THE SUBDIVISION IMPROVEMENT AGREEMENT**

BE IT RESOLVED AND ORDERED that the City Council of the City of Elk Grove pursuant to Government Code Section 66458, hereby approves the Final Subdivision Map, a copy of which is hereby attached and made a part of the Resolution; submitted at the Elk Grove City Council meeting in connection with **PULTE HOME CORPORATION, A MICHIGAN CORPORATION** and the subdivision designated as Del Webb Village 1 (Subdivision No. 03-479.01).

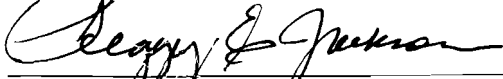
BE IT FURTHER RESOLVED AND ORDERED that the City Council of the City of Elk Grove hereby approves a Subdivision Improvement Agreement and that the Mayor is hereby authorized and directed to execute a Subdivision Improvement Agreement on behalf of the City of Elk Grove in connection with the above identified subdivision in the form hereto attached, and for all matters incidental thereto, and to do and perform everything necessary to carry out the purpose of this resolution.

PASSED AND ADOPTED by the City Council of the City of Elk Grove on this 8th day of November 2006.



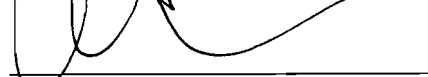
RICK SOARES, MAYOR of the
CITY OF ELK GROVE

ATTEST:



PEGGY E. JACKSON, CITY CLERK

APPROVED AS TO FORM:



ANTHONY B. MANZANETTI,
CITY ATTORNEY

OWNER'S STATEMENT

THE UNDERSIGNED HEREBY CONSENT TO THE PREPARATION AND RECORDATION OF THIS FINAL MAP AND OFFERS FOR DEDICATION AND DOES HEREBY DEDICATE TO ANY AND ALL PUBLIC USES, UPON COMPLETION OF IMPROVEMENTS, THE PUBLIC BRUCEVILLE ROAD, BOULEVARD, CIRCLES AND WAYS SHOWN HEREON WITHIN THESE BOUNDARIES, AND OFFERS FOR DEDICATION AND DOES HEREBY DEDICATE TO ANY AND ALL PUBLIC USES EASEMENTS FOR THE FOLLOWING SPECIFIC PURPOSES:

- A. EASEMENT FOR CONSTRUCTING AND MAINTAINING CENTRALIZED MAIL DELIVERY BOXES, PEDESTALS AND SLABS, TOGETHER WITH ANY AND ALL APPURTENANCES PERTAINING THERETO, INCLUDING PEDESTRIAN ACCESS FOR DELIVERY AND RECEIPT OF MAIL ON, OVER, UNDER AND ACROSS STRIPS OF LAND FIVE (5) FEET IN WIDTH, LYING CONTIGUOUS TO THE STRIPS-OF-WAY DELINEATED ABOVE AND SHOWN HEREON. THE LOCATION TO BE DETERMINED BY THE U.S. POSTAL SERVICE WITH THE FUTURE PLACEMENT OF MAIL DELIVERY BOXES.
B. EASEMENTS FOR PLANTING AND MAINTAINING TREES, INSTALLATION AND MAINTENANCE OF ELECTROLIERS, TRAFFIC CONTROL DEVICES, WATER AND GAS PIPES, AND FOR UNDERGROUND WIRES AND CONDUITS FOR ELECTRICAL, TELEPHONE AND TELEVISION SERVICES, TOGETHER WITH ANY AND ALL APPURTENANCES PERTAINING THERETO, ON, OVER, UNDER AND ACROSS THOSE STRIPS OF LAND TWELVE AND ONE-HALF (12.5) FEET IN WIDTH LYING CONTIGUOUS TO THE PUBLIC BOULEVARD, CIRCLES ROAD AND WAYS, AND AS APPROVED BY THE CITY ENGINEER OF THE CITY OF ELK GROVE, AS SHOWN HEREON, AND DESIGNATED "PUBLIC UTILITY EASEMENT" (P.U.E.)
C. RIGHT OF WAY AND EASEMENTS FOR INSTALLATION AND MAINTENANCE OF A PEDESTRIAN WALKWAY, TOGETHER WITH ANY AND ALL APPURTENANCES PERTAINING THERETO ON, OVER, UNDER AND ACROSS LOTS A, B, C, D, E, F, J, K, L, M, N AND O SHOWN HEREON AND DESIGNATED "PEDESTRIAN EASEMENT." SAID STRIPS ARE TO BE KEPT OPEN AND FREE FROM BUILDINGS (P.E.)
D. VISIBILITY EASEMENT TO BE KEPT FREE FROM SIGNS, HEDGES, STRUCTURES, NATURAL GROWTH, FENCES OR OTHER OBSTRUCTIONS TO THE VIEW HIGHER THAN TWO FEET SIX INCHES (2'-6") ABOVE THE NEAREST PAVEMENT SURFACE WITHIN THE AREA OVER AND ACROSS THAT LAND DESIGNATED HEREON AS "VISIBILITY EASEMENT" (V.E.).

LOTS A, B, C, D, E, J, M, N AND O AS SHOWN HEREON SHALL BE GRANTED IN FEE SIMPLE PER SEPARATE INSTRUMENT TO THE CITY OF ELK GROVE FOR LANDSCAPING PURPOSES.

LOTS K AND L AS SHOWN HEREON SHALL BE GRANTED IN FEE SIMPLE PER SEPARATE INSTRUMENT TO THE CITY OF ELK GROVE AS PUBLIC PASEOS.

LOT G AS SHOWN HEREON SHALL BE GRANTED IN FEE SIMPLE PER SEPARATE INSTRUMENT TO THE CITY OF ELK GROVE AS RECREATION AREA/OPEN SPACE. LOT F AS SHOWN HEREON SHALL BE GRANTED IN FEE SIMPLE PER SEPARATE INSTRUMENT TO THE CITY OF ELK GROVE FOR DRAINAGE PURPOSES.

LOT I AS SHOWN HEREON SHALL BE GRANTED IN FEE SIMPLE PER SEPARATE INSTRUMENT TO THE CITY OF ELK GROVE FOR PARK PURPOSES.

LOT H AS SHOWN HEREON SHALL BE DEDICATED TO THE HOME OWNER'S ASSOCIATION BY SEPARATE INSTRUMENT.

PULTE: HOME CORPORATION, A MICHIGAN CORPORATION

BY NAME Gregory S. Van Dam DATE 8/4/06 TITLE: Chief President, Land Development

BY NAME CHRISTOPHER B. CADY DATE 8/14/06 TITLE: DIVISION PRESIDENT

NOTARY'S ACKNOWLEDGMENT

STATE OF CALIFORNIA } SS COUNTY OF Placer

ON THE 4 DAY OF August, 2006, BEFORE ME, Julie M. Osterman, A NOTARY PUBLIC IN AND FOR SAID COUNTY AND STATE, PERSONALLY APPEARED, Gregory S. Van Dam

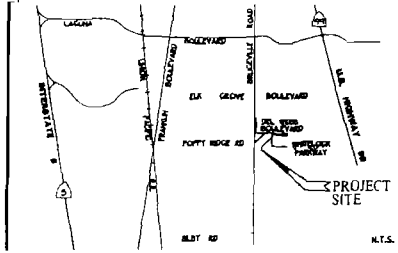
I PROVED TO ME ON THE BASIS OF SATISFACTORY EVIDENCE TO BE THE PERSON WHOSE NAME IS SUBSCRIBED TO THE WITHIN INSTRUMENT AND ACKNOWLEDGED TO ME THAT HE/SHE EXECUTED THE SAME IN HIS/HER AUTHORIZED CAPACITY, AND THAT BY HIS/HER SIGNATURE ON THE INSTRUMENT THE PERSON, OR THE ENTITY ON BEHALF OF WHICH THE PERSON ACTED, EXECUTED THE INSTRUMENT

WITNESS MY HAND Julie M Osterman PRINTED NAME: Julie M. Osterman

MY PRINCIPAL PLACE OF BUSINESS IS THE COUNTY OF Placer County

MY COMMISSION EXPIRES. Nov 23, 2006

MY COMMISSION NO.: 1386624



VICINITY MAP

NOTARY'S ACKNOWLEDGMENT

STATE OF CALIFORNIA } SS COUNTY OF Placer

ON THE 4 DAY OF August, 2006, BEFORE ME, Julie M. Osterman, A NOTARY PUBLIC IN AND FOR SAID COUNTY AND STATE, PERSONALLY APPEARED, Christopher B. Cady

I PROVED TO ME ON THE BASIS OF SATISFACTORY EVIDENCE TO BE THE PERSON WHOSE NAME IS SUBSCRIBED TO THE WITHIN INSTRUMENT AND ACKNOWLEDGED TO ME THAT HE/SHE EXECUTED THE SAME IN HIS/HER AUTHORIZED CAPACITY, AND THAT BY HIS/HER SIGNATURE ON THE INSTRUMENT THE PERSON, OR THE ENTITY ON BEHALF OF WHICH THE PERSON ACTED, EXECUTED THE INSTRUMENT

WITNESS MY HAND Julie M. Osterman PRINTED NAME: Julie M. Osterman

MY PRINCIPAL PLACE OF BUSINESS IS THE COUNTY OF Placer County

MY COMMISSION EXPIRES Nov. 23, 2006

MY COMMISSION NO 1386624

SOILS REPORT

A PRELIMINARY SOILS REPORT WAS PREPARED BY KLEINFELDER, INC. FILE NO 51625, DATED JUNE 2, 2005. A COPY OF THIS REPORT IS ON FILE FOR PUBLIC INSPECTION AT THE PUBLIC WORKS DEPARTMENT OF THE CITY OF ELK GROVE

SURVEYOR'S STATEMENT

THIS MAP WAS PREPARED BY ME OR UNDER MY DIRECTION AND IS BASED UPON A FIELD SURVEY IN CONFORMANCE WITH THE REQUIREMENTS OF THE SUBDIVISION MAP ACT AND LOCAL ORDINANCE AT THE REQUEST OF DEL WEBB CALIFORNIA CORP., AN ARIZONA CORPORATION IN JUNE 2005. I HEREBY STATE THAT THIS FINAL MAP SUBSTANTIALLY CONFORMS TO THE CONDITIONALLY APPROVED TENTATIVE MAP, THAT THE MONUMENTS WILL BE OF THE CHARACTER AND WILL OCCUPY THE POSITIONS AS INDICATED AND WILL BE SET BY DECEMBER 2007; AND THAT SAID MONUMENTS WILL BE SUFFICIENT TO ENABLE THE SURVEY TO BE RETRACED TIE NOTES TO ALL CENTERLINE MONUMENTS WILL BE PROVIDED TO THE CITY OF ELK GROVE PRIOR TO THE ABOVE DATE

THE SUBDIVISION WITHIN THE HEAVY BORDER CONTAINS 53.22+ ACRES, CONSISTING OF 160 RESIDENTIAL LOTS AND 15 MISCELLANEOUS LOTS

WOOD RODGERS, INC



CRAIG E. SPES PLS 7944 EXP. 12-31-07

AUGUST 3, 2006 DATE

CITY ENGINEER'S STATEMENT

I HEREBY STATE THAT I HAVE EXAMINED THIS FINAL MAP OF SUBDIVISION NO. 03-479.01 OF DEL WEBB - LAGUNA RIDGE VILLAGE 1 AND FIND IT TO BE SUBSTANTIALLY THE SAME AS THE TENTATIVE MAP CONDITIONALLY APPROVED BY THE PLANNING COMMISSION OF THE CITY OF ELK GROVE ON MAY 19, 2005, AND ANY APPROVED ALTERATIONS THEREOF, THAT ALL APPLICABLE PROVISIONS OF THE SUBDIVISION MAP ACT AND LOCAL ORDINANCE HAVE BEEN COMPLIED WITH AND THAT I AM SATISFIED THAT SAID MAP IS TECHNICALLY CORRECT

DATE ROBERT L. LEE CITY ENGINEER, CITY OF ELK GROVE R.C.E. # 23076 EXPIRATION DATE 12-31-07

CITY CLERK'S STATEMENT

I, THE CITY CLERK OF THE CITY OF ELK GROVE, HEREBY STATE THE CITY COUNCIL OF THE CITY OF ELK GROVE HAS APPROVED THIS FINAL MAP OF SUBDIVISION NO. 03-479.01 OF DEL WEBB - LAGUNA RIDGE VILLAGE 1 AND ACCEPTED, SUBJECT TO IMPROVEMENT, ON BEHALF OF THE PUBLIC, ANY REAL PROPERTY OFFERED FOR DEDICATION FOR PUBLIC USE IN CONFORMITY WITH THE TERMS OF THE OFFER OF DEDICATION, ALL AS SHOWN ON THIS MAP.

DATE PEGGY E. JACKSON CLERK OF THE CITY COUNCIL CITY OF ELK GROVE, CALIFORNIA

RECORDER'S STATEMENT

FILED THIS DAY OF 2006, AT M IN BOOK OF MAPS AT PAGE AT THE REQUEST OF WOOD RODGERS, INC. TITLE TO THE LAND INCLUDED IN THIS FINAL MAP BEING VESTED AS PER CERTIFICATE NO. ON FILE IN THIS OFFICE

RECORDER OF SACRAMENTO COUNTY DOCUMENT NO. STATE OF CALIFORNIA

BY, DEPUTY FEE: \$

SUBDIVISION NO. 03-479.01 DEL WEBB - LAGUNA RIDGE VILLAGE 1

BEING A PORTION OF AREA 2 OF THAT CERTAIN BOUNDARY LINE ADJUSTMENT RECORDED IN BOOK 20060530, AT PAGE 2299, OFFICIAL RECORDS OF SACRAMENTO COUNTY CITY OF ELK GROVE COUNTY OF SACRAMENTO, STATE OF CALIFORNIA



WOOD RODGERS ENGINEERING - MAPPING - PLANNING - SURVEYING 3301 C St., Bldg. 100-B Tel 916.341.7780 Sacramento, CA 95816 Fax 916.341.7787

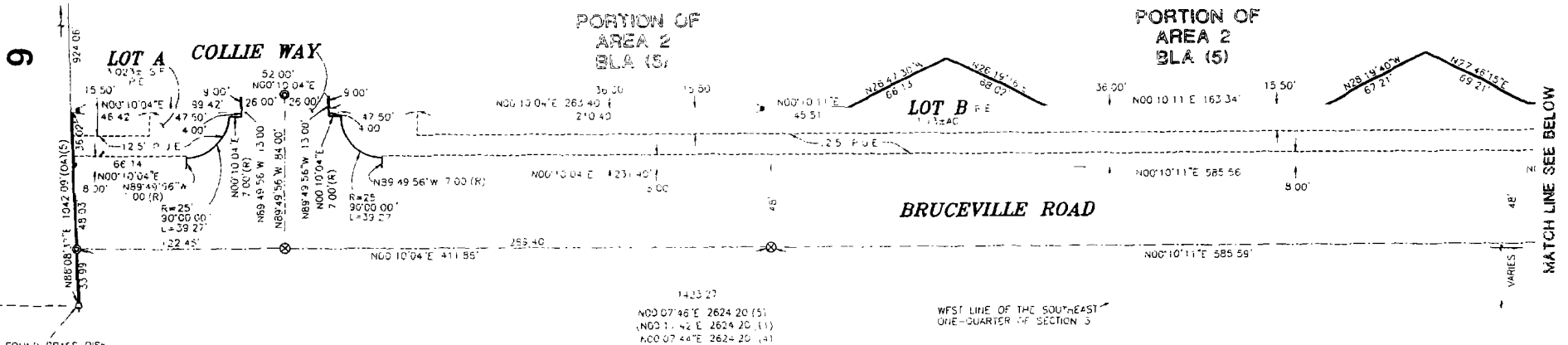
SEPTEMBER 2006

Sheet 1 of 14 1081015

9

PORTION OF AREA 2 BLA (5)

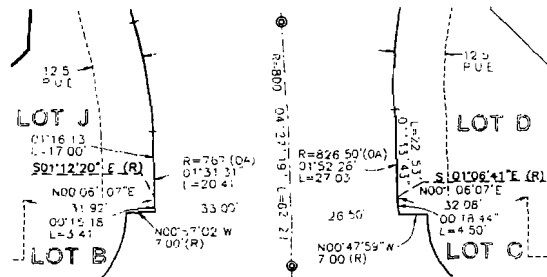
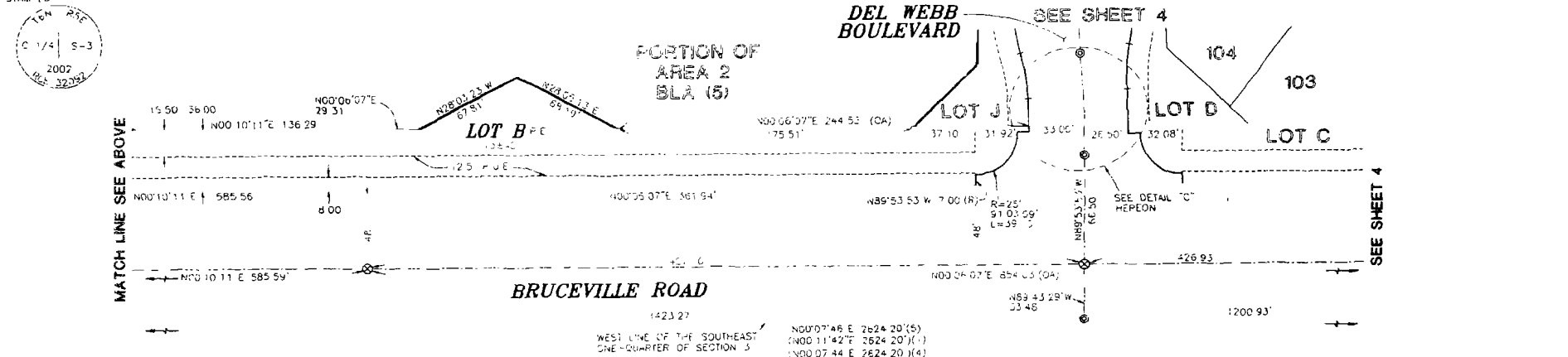
PORTION OF AREA 2 BLA (5)



PORTION OF AREA 2 BLA (5)

DEL WEBB BOULEVARD

SEE SHEET 4



**SUBDIVISION NO. 03-479.01
DEL WEBB - LAGUNA RIDGE
VILLAGE 1**

BEING A PORTION OF AREA 2 OF THAT CERTAIN BOUNDARY
LINE ADJUSTMENT RECORDED IN BOOK 20060530, AT PAGE 2229,
OFFICIAL RECORDS OF SACRAMENTO COUNTY
CITY OF ELK GROVE,
COUNTY OF SACRAMENTO, STATE OF CALIFORNIA

WOOD RODGERS
ENGINEERING - MAPPING - PLANNING - SURVEYING
3301 C ST., Bldg. 100-B Tel 916.341.7780
Sacramento, CA 95816 Fax 916.341.7787

SEPTEMBER 2006

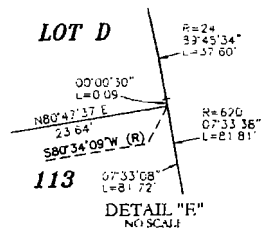
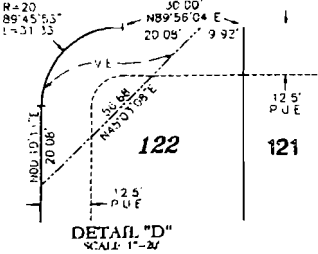
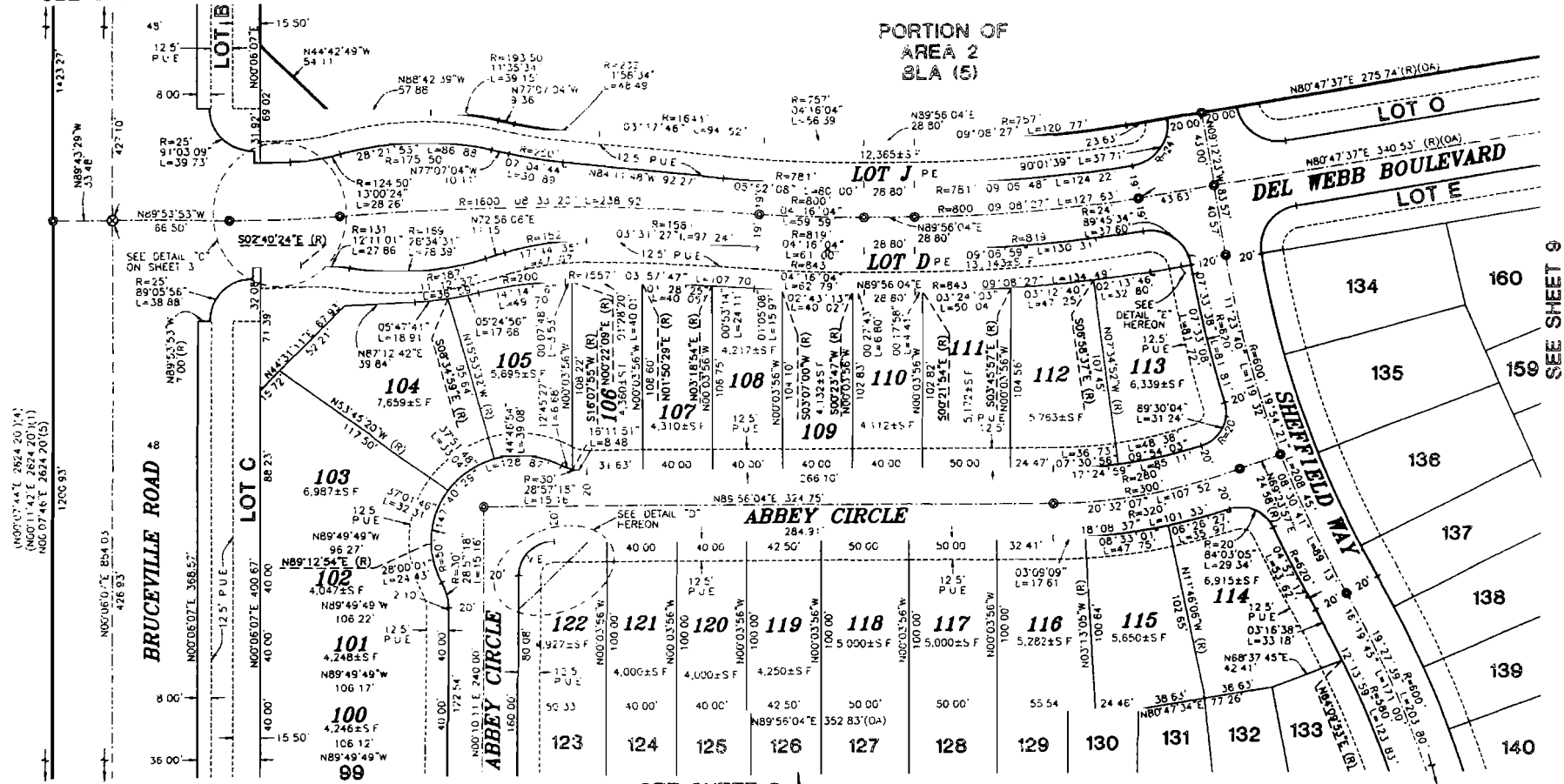
Sheet 3 of 14

1081015

SEE SHEET 2 FOR BASIS OF BEARINGS, LEGEND, NOTES AND REFERENCES

SEE SHEET 3

PORTION OF
AREA 2
BLA (5)



SEE SHEET 5



0 20 40 80
SCALE: 1"=40'

**SUBDIVISION NO. 03-479.01
DEL WEBB - LAGUNA RIDGE
VILLAGE 1**

BEING A PORTION OF AREA 2 OF THAT CERTAIN BOUNDARY
LINE ADJUSTMENT RECORDED IN BOOK 20060530, AT PAGE 2299,
OFFICIAL RECORDS OF SACRAMENTO COUNTY
CITY OF ELK GROVE
COUNTY OF SACRAMENTO, STATE OF CALIFORNIA



WOOD RODGERS
ENGINEERING - MAPPING - PLANNING - SURVEYING
3301 C ST., BOX 100-B Sacramento, CA 95818
Tel: 916.341.7700 Fax: 916.341.7707

SEPTEMBER 2006

Sheet 4 of 14
1081.015

SEE SHEET 2 FOR BASIS OF BEARINGS, LEGEND, NOTES AND REFERENCES

(N60°04'44"E 2624.207(4)
N65°11'42"E 2624.207(1)
N0°27'46"E 2524.22(5)

WEST LINE OF THE SOUTHWEST
CORNER - QUARTER OF SECTION 3

1200 93

N00°06'07"E 504.02
126 93

BRUCEVILLE ROAD

LOY C

36.00

8.00'

4.00'

4.00'

4.00'

4.00'

4.00'

4.00'

4.00'

4.00'

4.00'

4.00'

4.00'

4.00'

4.00'

4.00'

4.00'

4.00'

4.00'

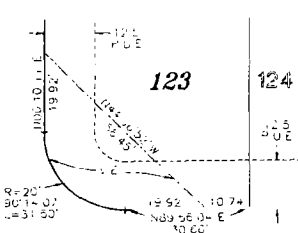
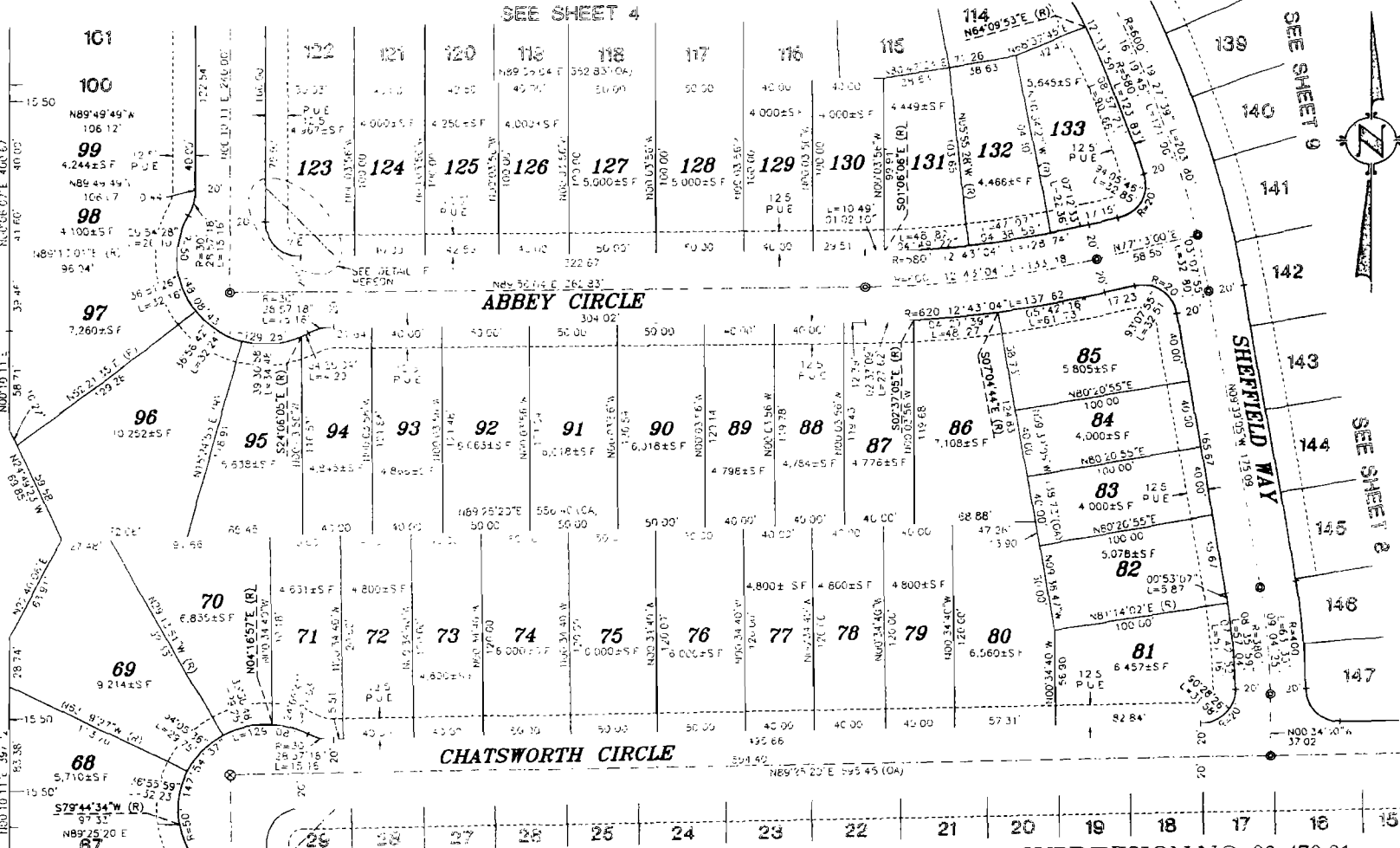
4.00'

4.00'

4.00'

4.00'

4.00'



SEE SHEET 6

SUBDIVISION NO. 03-479.01
DEL WEBB - LAGUNA RIDGE
VILLAGE 1

BEING A PORTION OF AREA 2 OF THAT CERTAIN BOUNDARY
LINE ADJUSTMENT RECORDED IN BOOK 20660530, AT PAGE 1239,
OFFICIAL RECORDS OF SACRAMENTO COUNTY,
CITY OF ELK GROVE,
COUNTY OF SACRAMENTO, STATE OF CALIFORNIA

WOOD RODGERS
ENGINEERING - MAPPING - PLANNING - SURVEYING
3301 C St., Bldg. 100-B Tel 916.341.7780
Sacramento, CA 95818 Fax 916.341.7787

SEPTEMBER 2006
Sheet 5 of 14
1081015

SEE SHEET 2 FOR BASIS OF BEARINGS, LEGEND, NOTES AND REFERENCES

SEE SHEET 5

BRUCEVILLE ROAD

CHATSWORTH CIRCLE

CHATSWORTH CIRCLE

LOT F
SEE SHEET 10

SEE SHEET 7



0 20 40 80
SCALE 1"=40'

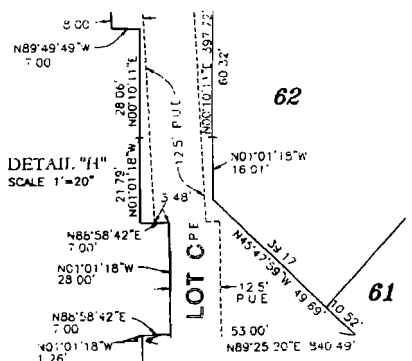
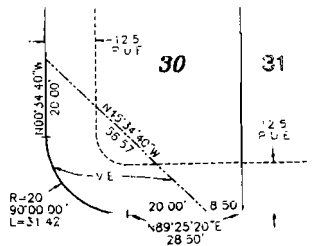
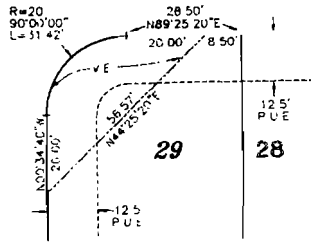
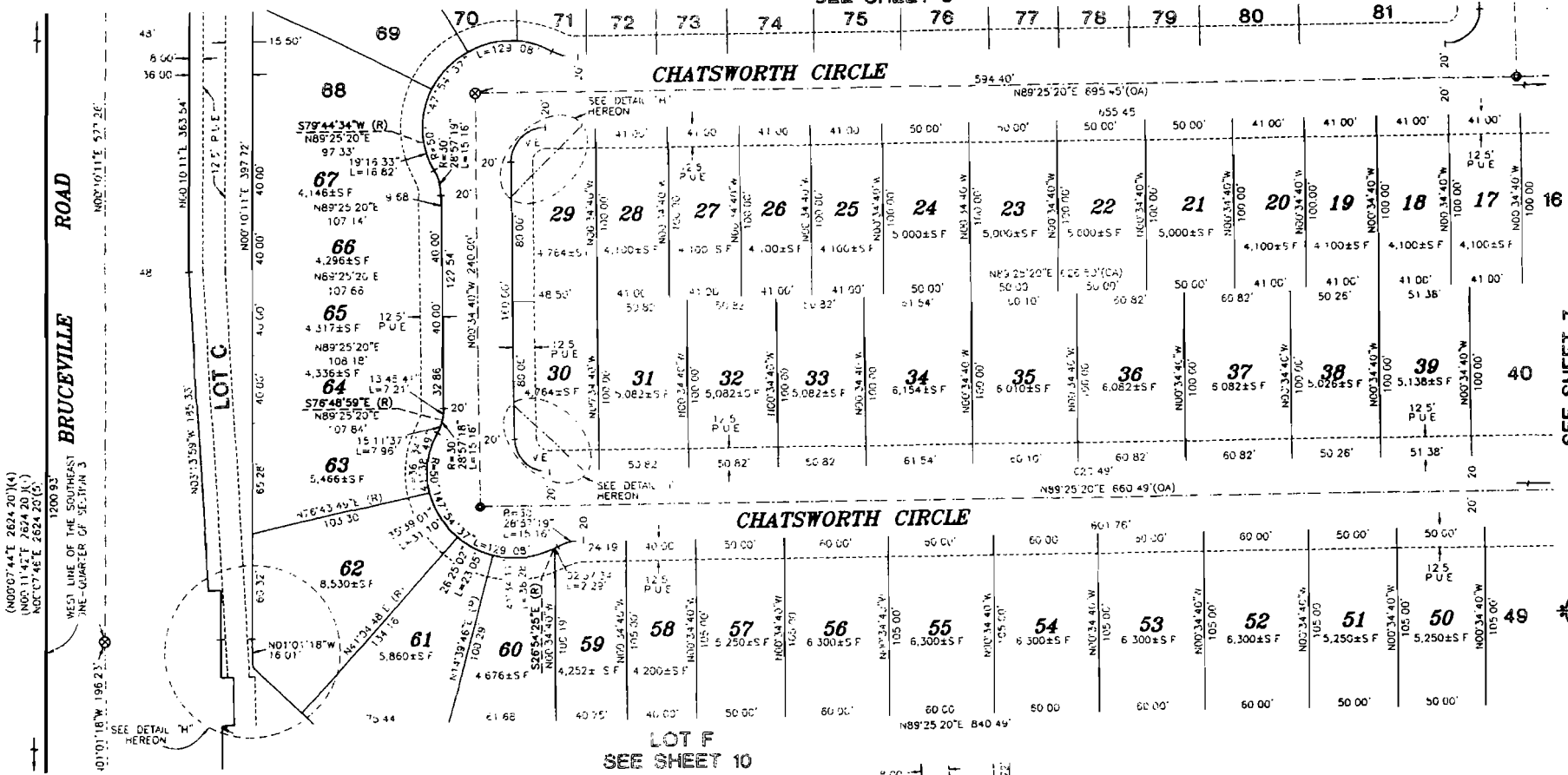
**SUBDIVISION NO. 03-479.01
DEL WEBB - LAGUNA RIDGE
VILLAGE 1**

BEING A PORTION OF AREA 2 OF THAT CERTAIN BOUNDARY
LINE ADJUSTMENT RECORDED IN BOOK 20060530, AT PAGE 2299,
OFFICIAL RECORDS OF SACRAMENTO COUNTY
CITY OF ELK GROVE
COUNTY OF SACRAMENTO, STATE OF CALIFORNIA

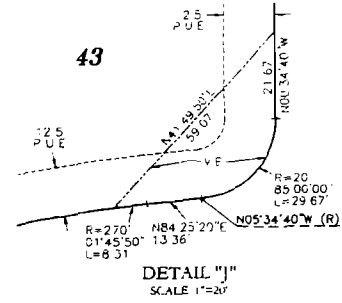
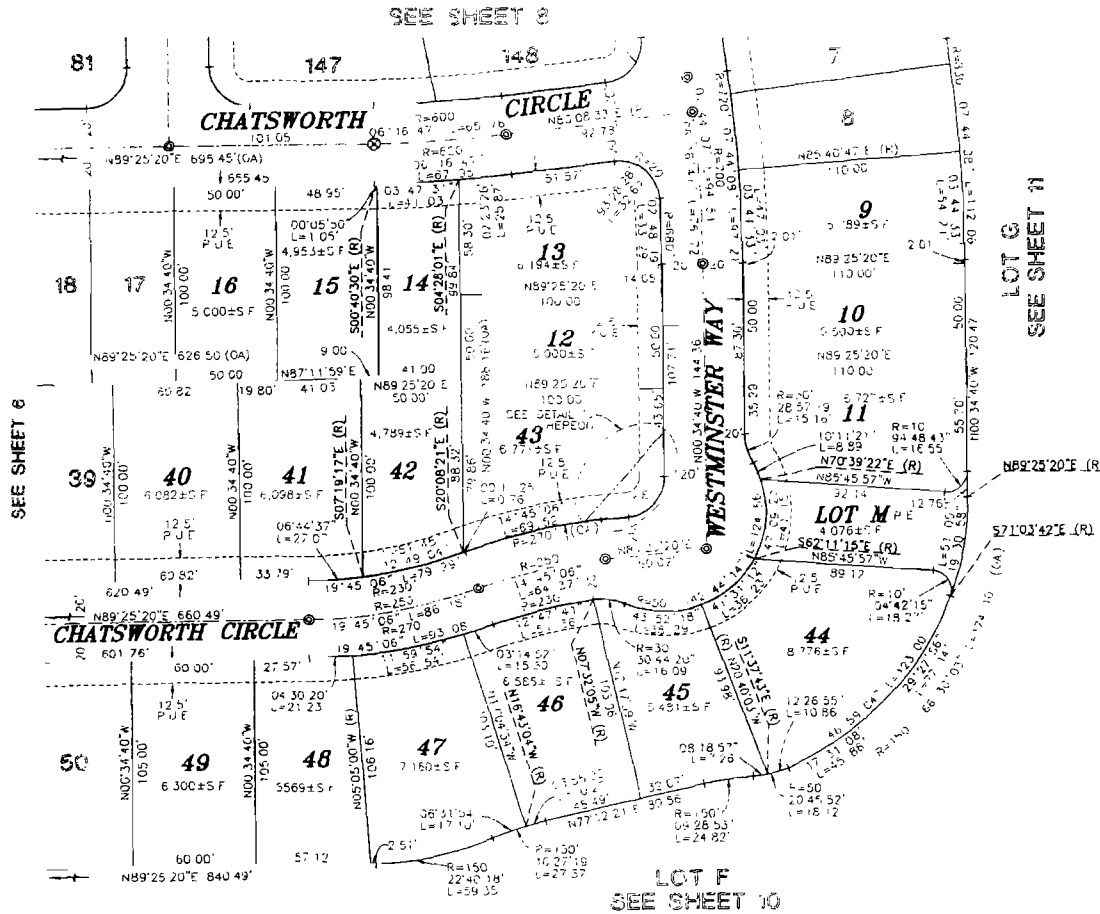
WOOD ROGERS
ENGINEERING • MAPPING • PLANNING • SURVEYING
3301 C ST., SUITE 100-B TEL 916.341.7760
SACRAMENTO, CA 95818 FAX 916.341.7767

SEPTEMBER 2006

Sheet 6 of 14
1081.015



SEE SHEET 2 FOR BASIS OF BEARINGS, LEGEND, NOTES AND REFERENCES



0 20 40 80

SCALE 1"=40'

SUBDIVISION NO. 03-479.01
 DEL WEBB - LAGUNA RIDGE
 VILLAGE 1

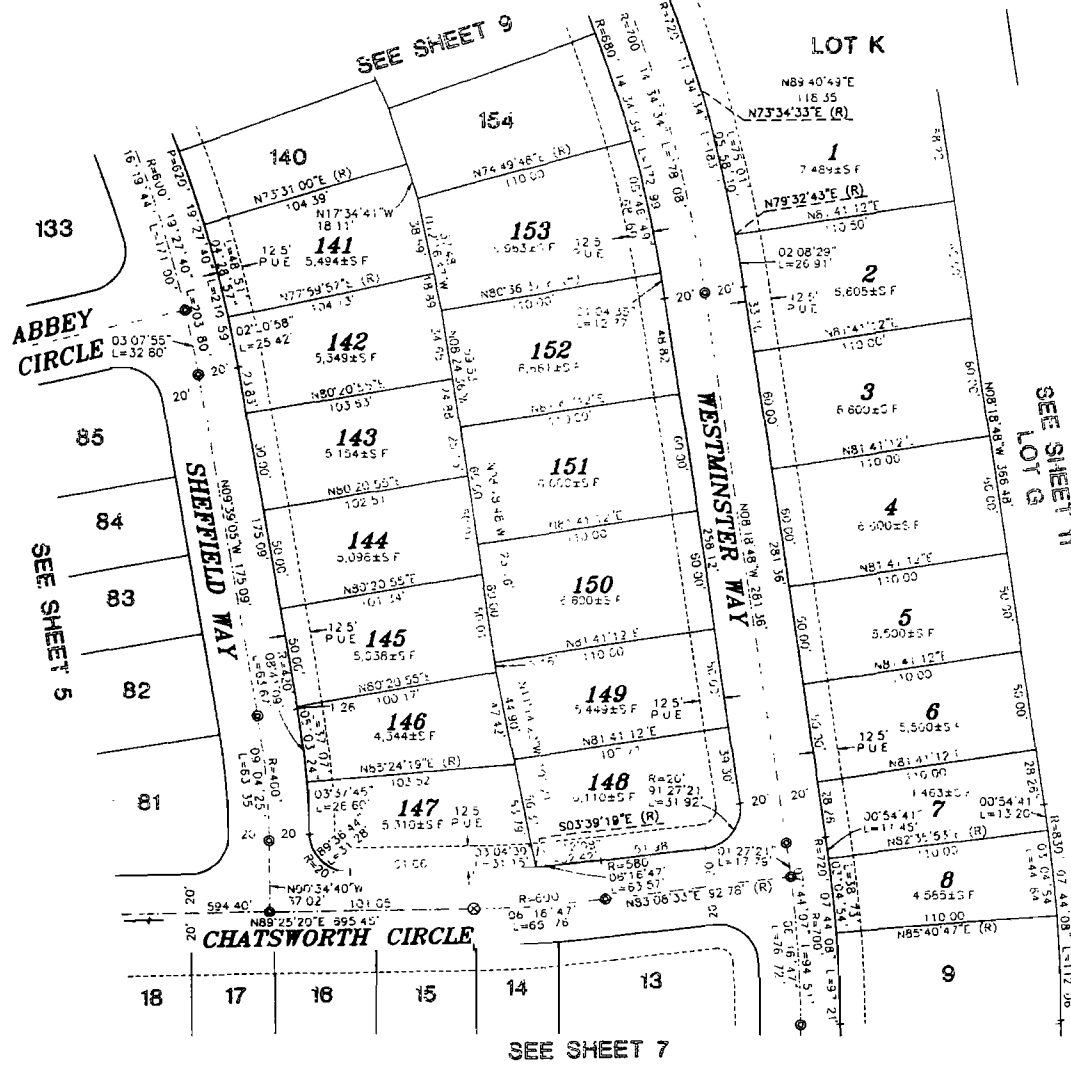
BEING A PORTION OF AREA 2 OF THAT CERTAIN BOUNDARY
 LINE ADJUSTMENT RECORDED IN BOOK 20060530, AT PAGE 2299,
 OFFICIAL RECORDS OF SACRAMENTO COUNTY
 CITY OF ELK GROVE
 COUNTY OF SACRAMENTO, STATE OF CALIFORNIA

WOOD RODGERS
 ENGINEERING - MAPPING - PLANNING - SURVEYING
 3301 C St., Bldg. 100-B Tel: 916.341.7760
 Sacramento, CA 95816 Fax: 916.341.7767

SEPTEMBER 2006

Sheet 7 of 14

1081015



0 20 40 80
SCALE: 1"=40'

**SUBDIVISION NO. 03-479.01
DEL WEBB - LAGUNA RIDGE
VILLAGE 1**

BEING A PORTION OF AREA 2 OF THAT CERTAIN BOUNDARY
LINE ADJUSTMENT RECORDED IN BOOK 20060530, AT PAGE 2299,
OFFICIAL RECORDS OF SACRAMENTO COUNTY
CITY OF ELK GROVE
COUNTY OF SACRAMENTO, STATE OF CALIFORNIA

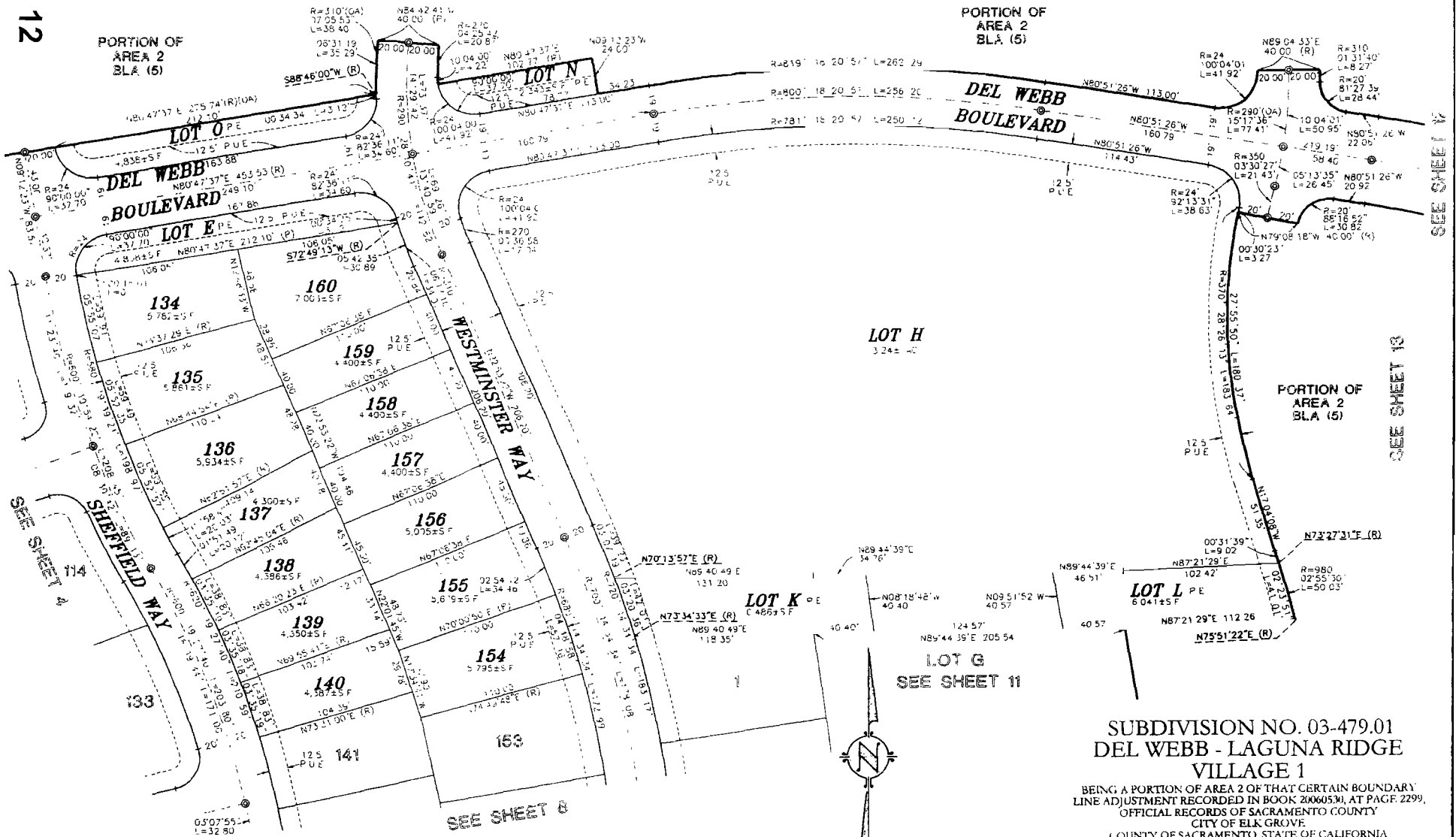
WOOD ROGERS
ENGINEERING • MAPPING • PLANNING • SURVEYING
3301 C ST., 8th Fl. Tel: 916.341.7780
Sacramento, CA 95838 Fax: 916.341.7787

SEPTEMBER 2006
Sheet 8 of 14
1681.015

SEE SHEET 2 FOR BASIS OF BEARINGS, LEGEND, NOTES AND REFERENCES.

PORTION OF AREA 2 BLA (5)

PORTION OF AREA 2 BLA (5)



SEE SHEET 11

SEE SHEET 13

SEE SHEET 11

SEE SHEET 10



0 20 40 80
SCALE: 1"=40'

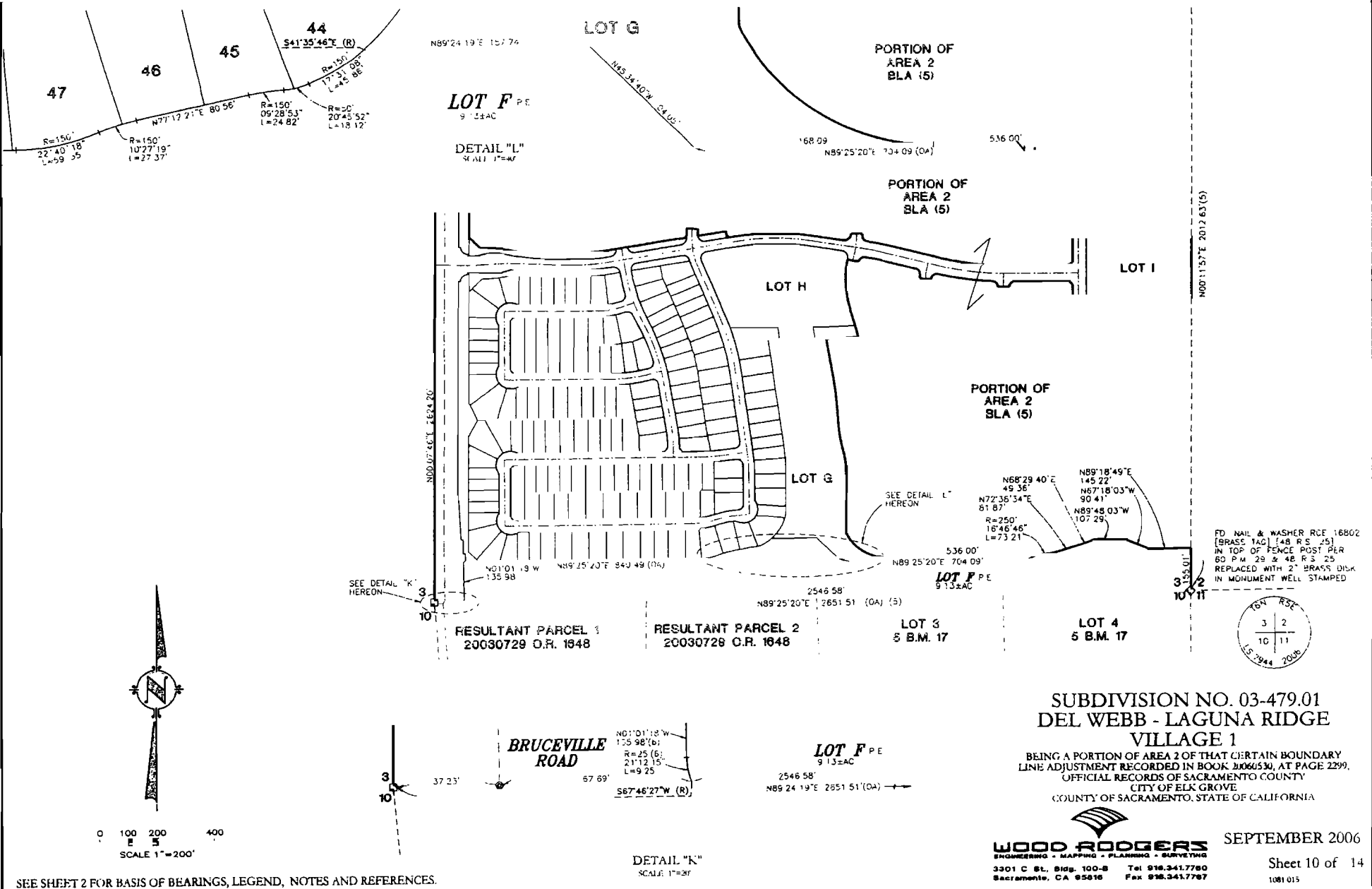
**SUBDIVISION NO. 03-479.01
DEL WEBB - LAGUNA RIDGE
VILLAGE 1**

BEING A PORTION OF AREA 2 OF THAT CERTAIN BOUNDARY
LINE ADJUSTMENT RECORDED IN BOOK 200605.M, AT PAGE 2299,
OFFICIAL RECORDS OF SACRAMENTO COUNTY
CITY OF ELK GROVE
COUNTY OF SACRAMENTO, STATE OF CALIFORNIA

WOOD ROGERS
ENGINEERING • MAPPING • PLANNING • SURVEYING
3301 C St., 818, 100-B Tel 916.241.7760
Sacramento, CA 95816 Fax 916.341.7787

SEPTEMBER 2006

Sheet 9 of 14
1161015

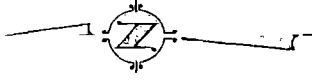
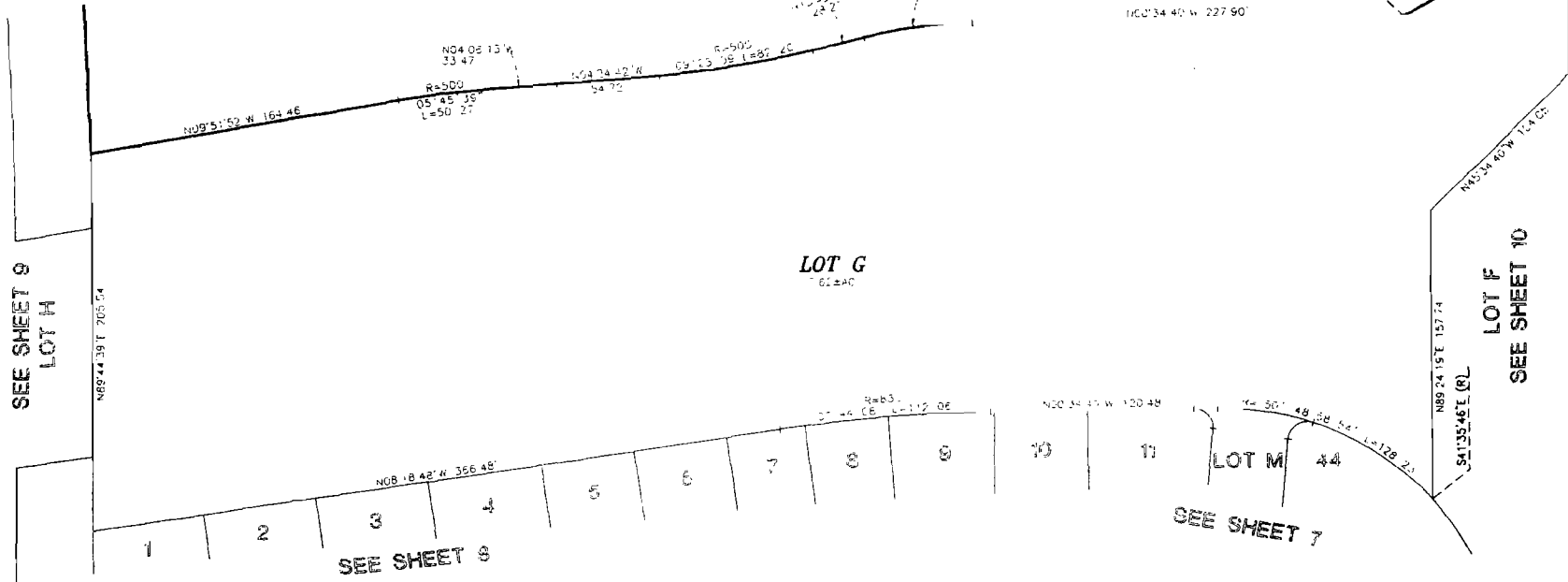


SEE SHEET 2 FOR BASIS OF BEARINGS, LEGEND, NOTES AND REFERENCES.

SUBDIVISION NO. 03-479.01
DEL WEBB - LAGUNA RIDGE
VILLAGE 1
 BEING A PORTION OF AREA 2 OF THAT CERTAIN BOUNDARY
 LINE ADJUSTMENT RECORDED IN BOOK 20060530, AT PAGE 2299,
 OFFICIAL RECORDS OF SACRAMENTO COUNTY
 CITY OF ELK GROVE
 COUNTY OF SACRAMENTO, STATE OF CALIFORNIA

WOOD RODGERS
 ENGINEERING - MAPPING - PLANNING - SURVEYING
 3301 C St., 810g. 100-8 Tel 916.341.7780
 Sacramento, CA 95816 Fax 916.341.7787

SEPTEMBER 2006
 Sheet 10 of 14
 1081015



0 20 40 80
 SCALE: 1" = 40'

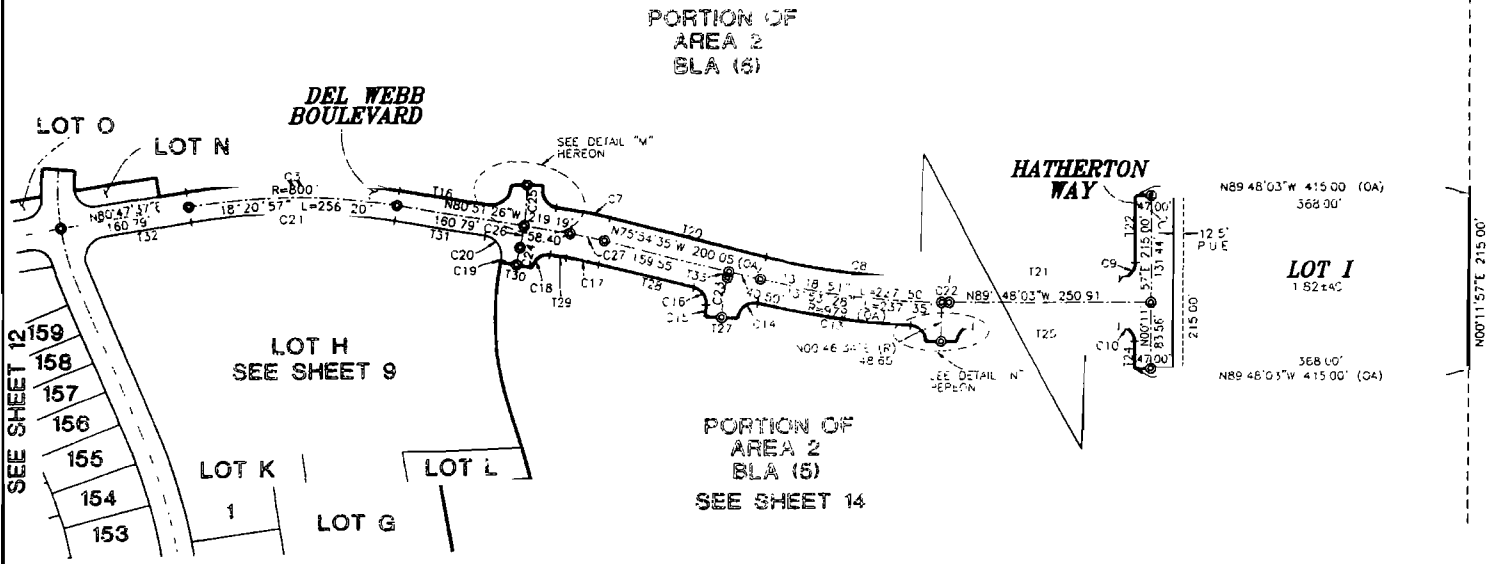
SEE SHEET 2 FOR BASIS OF BEARINGS, LEGEND, NOTES AND REFERENCES

**SUBDIVISION NO. 03-479.01
 DEL WEBB - LAGUNA RIDGE
 VILLAGE 1**

BEING A PORTION OF AREA 2 OF THAT CERTAIN BOUNDARY
 LINE ADJUSTMENT RECORDED IN BOOK 20060530, AT PAGE 2299,
 OFFICIAL RECORDS OF SACRAMENTO COUNTY
 CITY OF ELK GROVE
 COUNTY OF SACRAMENTO STATE OF CALIFORNIA

WOOD RODGERS
 ENGINEERING • MAPPING • PLANNING • SURVEYING
 3301 C St., Suite 100-B Tel: 916.341.7780
 Sacramento, CA 95816 Fax: 916.341.7787

SEPTEMBER 2006
 Sheet 11 of 14
 1641015



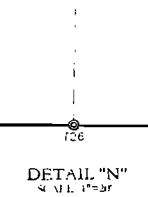
LINE TABLE

LINE	BEARING	DISTANCE
T14	N09°12'23\"W	46.00'
T15	N80°47'37\"E	113.00'
T16	N80°51'26\"W	113.00'
T17	N09°08'34\"W	8.00'
T18	N89°04'33\"E	40.00'
T19	N80°51'26\"W	22.06'
T20	N75°54'35\"W	200.05'
T21	N89°48'03\"W	210.91'
T22	N00°11'57\"E	82.44'
T23	N89°48'03\"W	47.00'
T24	N00°11'57\"E	34.56'
T25	N89°48'03\"W	181.26'
T26	N89°13'26\"W	40.00'
T27	N87°14'33\"W	40.00'
T28	N75°54'35\"W	122.50'
T29	N80°51'26\"W	20.92'
T30	N79°08'18\"W	40.00'
T31	N80°51'26\"W	114.43'
T32	N80°47'37\"E	113.00'
T33	N14°05'25\"E	7.73'

LINES T14, T17, T18, T25, T26, 27 AND T29 ARE RADIAL
 P.U.E.

CURVE TABLE

CURVE	RADIUS	DELTA	LENGTH
C3	819'	18°20'57\"	262.29'
C4	24'	100°04'01\"	41.92'
C5	310'	01°31'40\"	8.27'
C6	20'	81°27'39\"	28.44'
C7	529'	04°56'51\"	45.88'
C8	950'	13°53'28\"	230.32'
C9	20'	90°00'00\"	31.42'
C10	20'	90°00'00\"	31.42'
C11	20'	89°25'23\"	31.21'
C12	20'	87°48'12\"	30.64'
C13	1008'	10°53'02\"	191.48'
C14	20'	101°07'57\"	35.30'
C15	270'	03°09'02\"	14.85'
C16	20'	81°48'04\"	28.56'
C17	471'	04°56'51\"	40.67'
C18	20'	88°18'52\"	30.82'
C19	370'	00°30'23\"	3.27'
C20	24'	92°13'31\"	38.63'
C21	781'	18°20'57\"	250.12'
C22	879'	00°34'37\"	9.85'
C23	250'	11°19'58\"	49.45'
C24	350'	03°30'27\"	21.43'
C25	280'	10°04'01\"	50.95'
C26	280'	05°13'35\"	26.45'
C27	500'	04°56'51\"	43.18'



0 50 100 200
SCALE: 1"=100'

SUBDIVISION NO. 03-479.01
DEL WEBB - LAGUNA RIDGE
VILLAGE 1
 BEING A PORTION OF AREA 2 OF THAT CERTAIN BOUNDARY
 LINE ADJUSTMENT RECORDED IN BOOK 20060530, AT PAGE 2299,
 OFFICIAL RECORDS OF SACRAMENTO COUNTY
 CITY OF ELK GROVE
 COUNTY OF SACRAMENTO, STATE OF CALIFORNIA

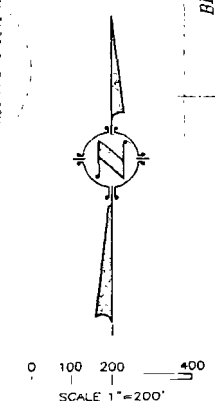
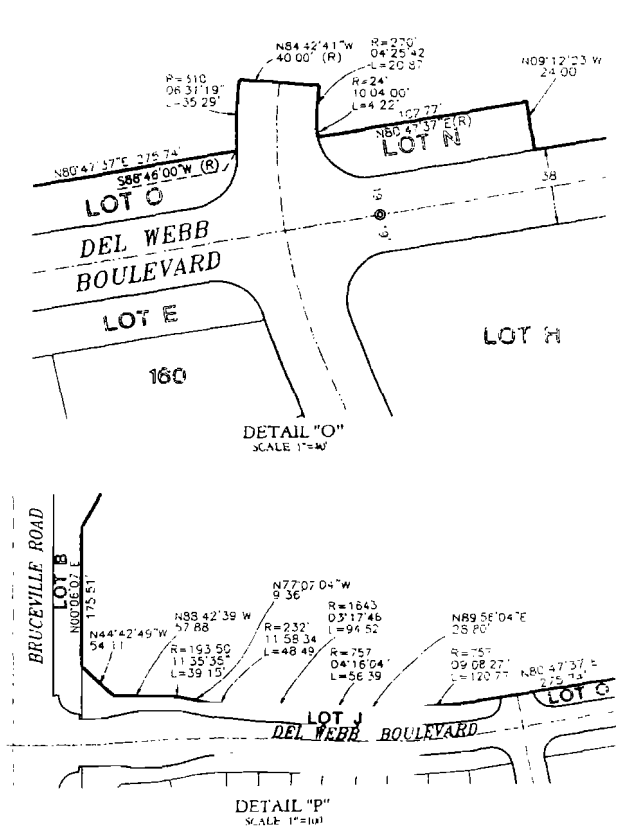
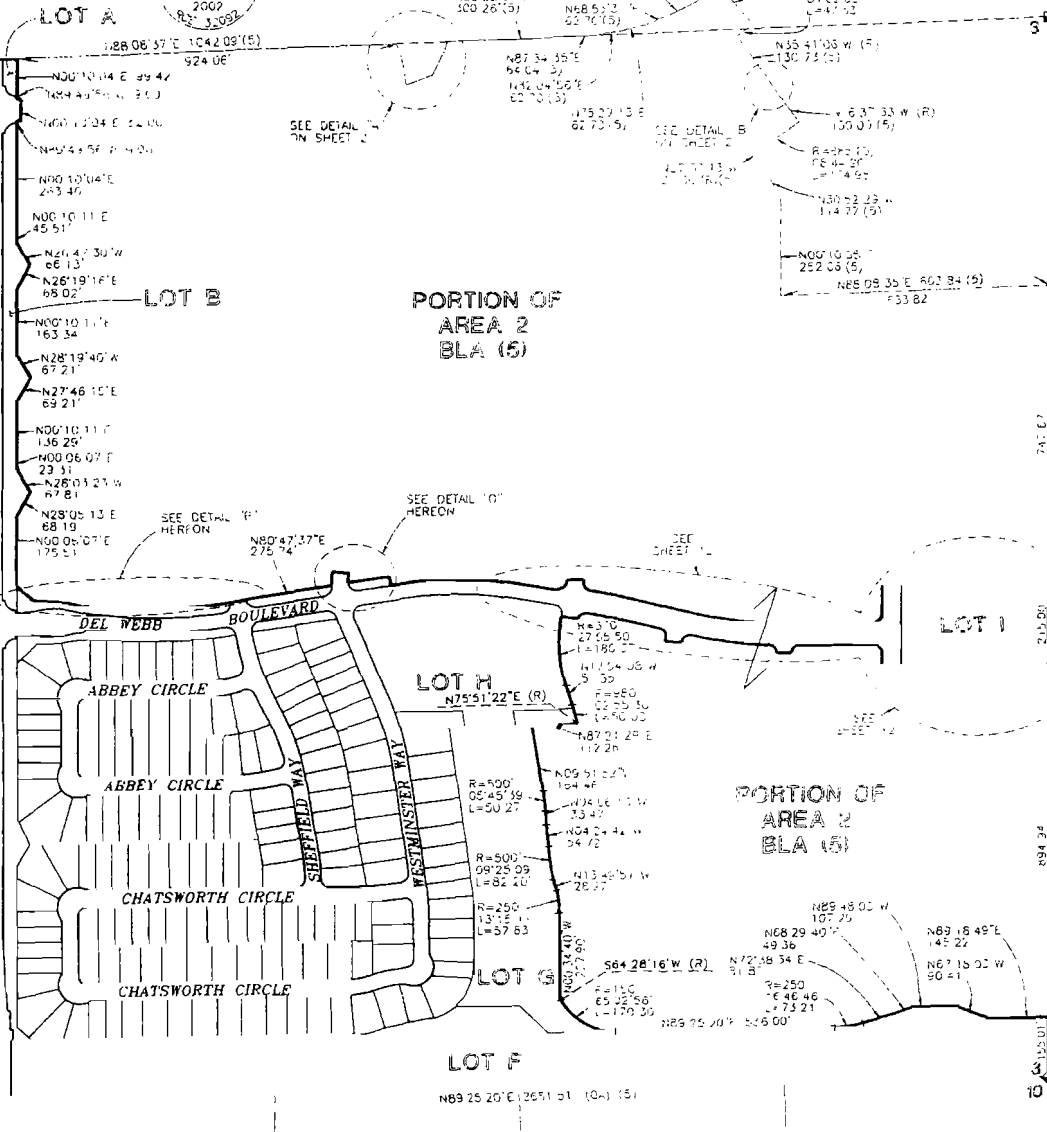
WOOD RODGERS
 ENGINEERING - MAPPING - PLANNING - SURVEYING
 3301 C ST., Bldg. 100-B Tel: 916.841.7780
 Sacramento, CA 95816 Fax: 916.341.7787

SEPTEMBER 2006
 Sheet 12 of 14
 1481015

SEE SHEET 2 FOR BASIS OF BEARINGS, LEGEND, NOTES AND REFERENCES.

16
3
C 1/4
3

FOUND BRASS DISK
IN CONCRETE IN
WELL PER (1) RESET
PER 213 3M
STAMPED



FO. NAIL & WASHER RCE 16802
(BRASS TAG) (4x R.S. 25)
IN TOP OF FENCE POST REP
60 P.M. 29 & 48 R.S. 25
REPLACED WITH 2" BRASS DISK
IN MONUMENT WELL STAMPED



SUBDIVISION NO. 03-479.01
DEL WEBB - LAGUNA RIDGE
VILLAGE 1

BEING A PORTION OF AREA 2 OF THAT CERTAIN BOUNDARY
(LINE ADJUSTMENT RECORDED IN BOOK 21860530, AT PAGE 2299,
OFFICIAL RECORDS OF SACRAMENTO COUNTY,
CITY OF ELK GROVE
COUNTY OF SACRAMENTO, STATE OF CALIFORNIA

WOOD RODGERS
ENGINEERING - MAPPING - PLANNING - SURVEYING
2301 C St., 8168 100-B
Sacramento, CA 95816
Tel 916.341.7760
Fax 916.341.7767

SEPTEMBER 2006

Sheet 13 of 14
1081115

SEE SHEET 2 FOR BASIS OF BEARINGS, LEGEND, NOTES AND REFERENCES

DEL WEBB BOULEVARD

SEE SHEET 4

SEE SHEET 5

SEE SHEET 6

SEE SHEET 10

104

103

102

101

100

99

98

97

96

95

94

93

92

91

90

89

88

87

86

85

84

83

82

81

LOT F

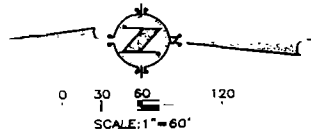
LOT C

BRUCEVILLE ROAD

LINE TABLE		
LINE	BEARING	DISTANCE
T34	N00°47'59"W	7.00'
T35	N89°53'53"W	7.00'
T36	N89°49'49"W	7.00'
T37	N00°10'11"E	28.06'
T38	N01°01'18"W	21.79'
T39	N88°58'42"E	7.00'
T40	N01°01'18"W	28.00'
T41	N88°58'42"E	7.00'
T42	N01°01'18"W	1.26'
T43	N89°25'20"E	53.00'
T44	N45°47'59"W	49.69'
T45	N01°01'18"W	16.01'
T46	N00°10'11"E	58.71'

*LINE T34 IS RADIAL

CURVE TABLE			
CURVE	RADIUS	DELTA	LENGTH
C27	25'	89°05'56"	38.88'
C28	826.50'	00°18'44"	4.50'



SUBDIVISION NO. 03-479.01
 DEL WEBB - LAGUNA RIDGE
 VILLAGE 1
 BEING A PORTION OF AREA 2 OF THAT CERTAIN BOUNDARY
 LINE ADJUSTMENT RECORDED IN BOOK 20060530, AT PAGE 2290,
 OFFICIAL RECORDS OF SACRAMENTO COUNTY
 CITY OF ELK GROVE
 COUNTY OF SACRAMENTO, STATE OF CALIFORNIA



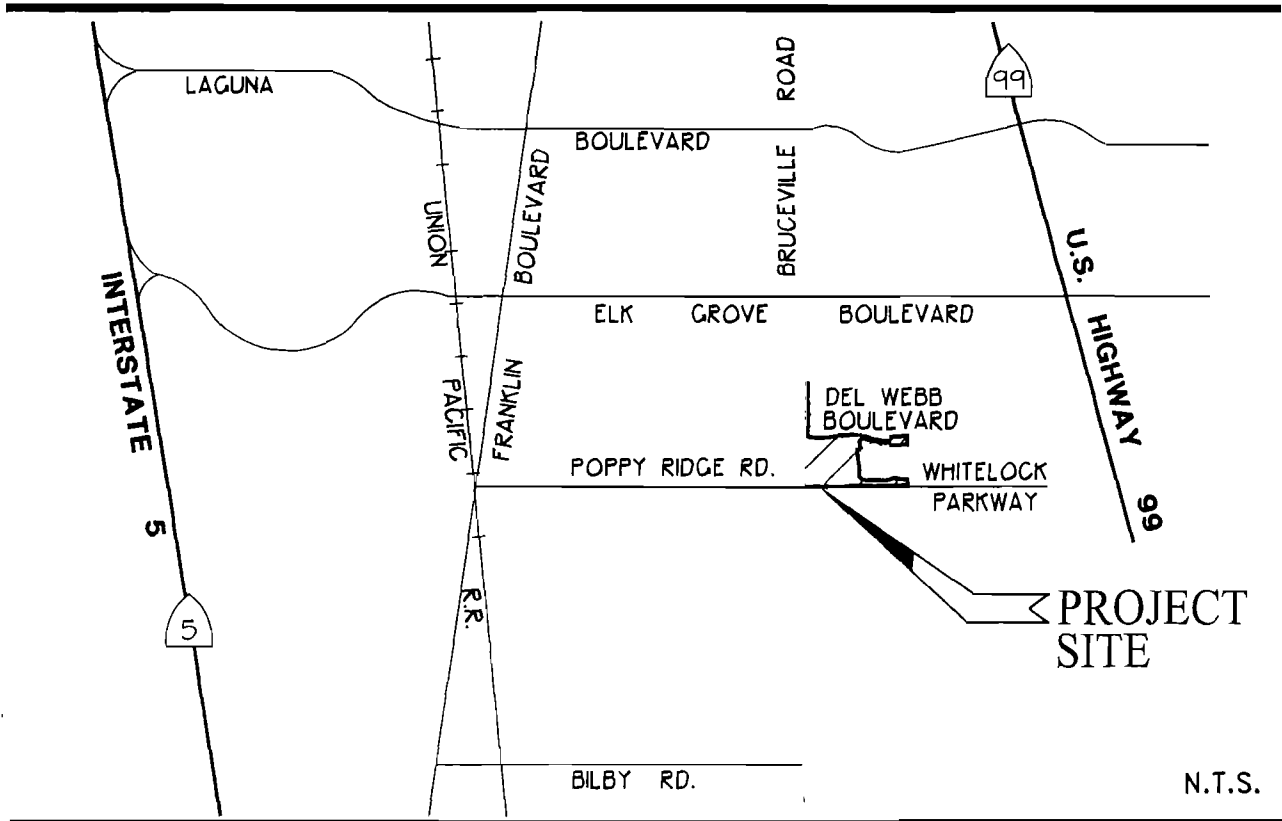
WOOD RODGERS
 ENGINEERING - MAPPING - PLANNING - SURVEYING
 3301 C St., Bldg. 100-B Tel: 916.341.7780
 Sacramento, CA 95816 Fax: 916.341.7787

SEPTEMBER 2006

Sheet 14 of 14
 1041115

SEE SHEET 2 FOR BASIS OF BEARINGS, LEGEND, NOTES AND REFERENCES.

DEL WEBB - LAGUNA RIDGE
VILLAGE 1
VICINITY MAP
PROJECT NO. 03479.01
CITY OF ELK GROVE
COUNTY OF SACRAMENTO STATE OF CALIFORNIA



VICINITY MAP



WOOD RODGERS
ENGINEERING • MAPPING • PLANNING • SURVEYING
3301 C St., Bldg. 100-B Tel 916.341.7760
Sacramento, CA 95816 Fax 916.341.7767


**CERTIFICATION
ELK GROVE CITY COUNCIL RESOLUTION NO. 2006-280**

STATE OF CALIFORNIA)
COUNTY OF SACRAMENTO) ss
CITY OF ELK GROVE)

I, Peggy E. Jackson, City Clerk of the City of Elk Grove, California, do hereby certify that the foregoing resolution was duly introduced, approved, and adopted by the City Council of the City of Elk Grove at a regular meeting of said Council held on November 8, 2006 by the following vote:

AYES : COUNCILMEMBERS: Soares, Scherman, Briggs, Cooper, Leary
NOES : COUNCILMEMBERS: None
ABSTAIN : COUNCILMEMBERS: None
ABSENT: COUNCILMEMBERS: None





**Peggy E. Jackson, City Clerk
City of Elk Grove, California**